

Left Side Instrument Panel



Right Side Instrument Panel



Optional Deluxe Instrument Panel

SPECIFICATIONS

Performance

Rated Operating Capacity¹
ROC with optional counterweight
Tipping Load
Hydraulic Pump Capacity
Travel Speed
Operating Weight

763

1500 lb. (680 kg)
1600 lb. (726 kg)
3000 lb. (1361 kg)
15 GPM (56 L/min.)
7.0 MPH (11.3 km/hr.)
5368 lb. (2435 kg)

Dimensions

Length (with bucket)
Width (with bucket)
Height
Height to Bucket Pin

130.1 in. (3304 mm)
68.0 in. (1727 mm)
77.3 in. (1963 mm)
114.5 in. (2909 mm)

Engine

Make/Model
Fuel/Cooling
Cylinders
SAE NET HP/Displacement
Fuel Tank Capacity

Kubota/V2203-EB
Diesel/Liquid
4
46/134 in.³ (2,2 L)
14 gal. (53 L)

Operation

Steering and Drive
Hydraulics

Forward, reverse, travel speed and steering controlled by two hand levers.
Raise/lower lift arms and dump/rollback bucket controlled by two foot pedals or optional hand controls.
Hydrostatic, four-wheel drive.

Standard Features

Adjustable Cushion Seat	Front Auxiliary Hydraulics	Seat Belt
Automatically Activated	Front & Rear Lights	Spark Arrestor Muffler
Glow Plugs	Lift Arm Support	10-16.5 Bobcat Heavy-Duty Tires
Bobcat Interlock Control System (BICS™)	Meters/Gauges/Warning Lights	
Bob-Tach	Operator Cab	
Dual Path Cooling System	Parking Brake	
Engine/Hydraulic Shutdown	Seat Bar	

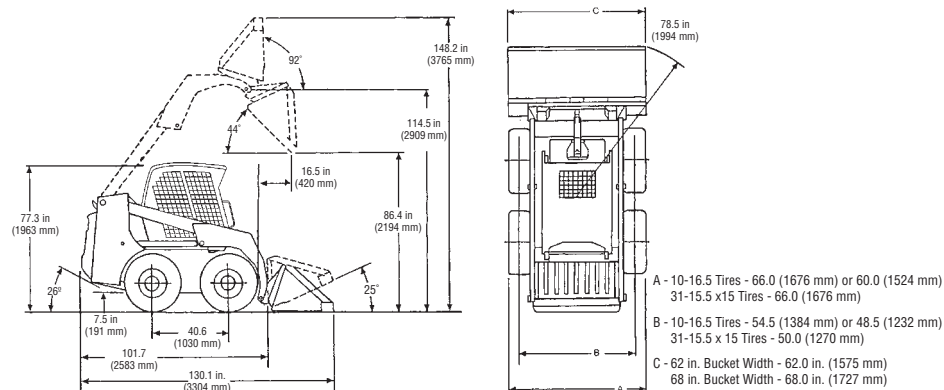
Options/Accessories

Advanced Control System (ACS)	Engine Block Heater	Side Windows
Advanced Hand Controls	Flasher/Strobe Lights	Skid-Steer Loader
Backup Alarm	Horn	Operator Training Kit
Cab Enclosure	Hydraulic Bucket Positioning ²	Solid Tires
Catalytic Purifier	Keyless Start System	Sound Package
Counterweight Kit	Rear Auxiliary Hydraulics	Special Applications Kit ³
Deluxe Cab	Rear Stabilizer	Suspension Seat (vinyl or cloth cover)
Deluxe Cab w/Heater	Segmented Tires	Top & Rear Windows
Deluxe Instrumentation	Service Safety Training Kit	Water Kit
		Weighlog

Bobcat Attachments

Angle Broom*	Front Scarifier	Super Scraper
Auger	Grader*	Sweeper
Backhoe	Hydraulic Breaker ⁴	Three Point Hitch
Brushcat™ Rotary Cutter	Hydraulic Pallet Forks	Tiller
Buckets	Industrial Grapple	Tilt-Tatch
Chipper*	Landplane	Tracks
Combination Bucket	Landscape Rake	Tree Spade
Concrete Mixer*	Pallet Forks	Trench Compactor
Concrete Pump*	Planer*	Trencher
Cutter Crusher	Rear Stabilizer	Utility Forks
Digger	Snow Blade	Vibratory Roller
Dozer Blade*	Snowblower*	Whisker Push Broom
Dumping Hopper	Sod Layer*	
Ejector Bucket	Soil Conditioner*	
Farm Grapple (for use with utility forks or bucket)		

*Attachment Control Kit Required.



B-1723

Bobcat Company • P.O. Box 6000 • West Fargo, ND 58078 • www.bobcat.com

Printed in U.S.A.

Powerful. Smooth. Fast.

Here's everything you want in a compact loader!

The Bobcat® 763 G-Series loader delivers plenty of power, lift capacity, lift height and travel speed.

The 763's 46-hp liquid-cooled engine produces plenty of traction and breakout force for excavating and handling large loads. There's also a 15-gpm hydraulic pump for efficient attachment performance.

The long wheelbase produces a smooth, comfortable ride and helps give this rugged loader 1,500 pounds of rated operating capacity.

As with any Bobcat loader, you get a wide choice of quick-mounting Bobcat attachments for your 763. The operator can easily replace a bucket with a backhoe, pallet fork, landscape rake, sweeper, tiller, grapple and many more.

Greater Comfort

The G-Series cab is designed with the operator in mind!

- Excellent visibility to sides, front and rear corners of loader.
- Roomy comfort for operators of all sizes.
- Rear-pivot seat bar.
- State-of-the-art instrumentation.
- Fully-enclosed cab and heating system available.
- Fully-adjustable suspension seat available.

1500 LB.

Rated Operating Capacity
1600 lb. with optional counterweight kit

114.5 IN.

Lift Height

46 HP

Liquid-Cooled Diesel Engine

Optional G-Series Deluxe Instrumentation Package includes:

- | | |
|--|--------------------------|
| • Multi-language capability | • Keyless start security |
| • System diagnostic capability | • Job clock |
| • All gauges read in metric or English units | • Digital clock |
| • Engine/hydraulics systems shutdown | • Help screens |
| | • Lockouts feature |

NOTE — Where applicable, dimensions are in accordance with Society of Automotive Engineers (SAE) and ISO standards. Specifications and design are subject to change without notice. Pictures of Bobcat skid-steer loaders may show other than standard equipment. All dimensions are given for loader equipped with standard tires. All dimensions are shown in inches. Respective metric dimensions are enclosed by parentheses. Bobcat Company complies with the requirements of ISO 9001 as registered with BSI.

¹ Operating capacity rated with standard digging bucket according to SAE standard J818. OPERATING CAPACITY TO EQUAL NO MORE THAN ONE-HALF THE TIPPING LOAD.

² Bucket positioning helps operator keep the same tilt of the load during lifting.

³ Includes Lexan front door, top and rear windows.

⁴ Special application kit (see #3) must be used.



Kn-30M-601-#640283-F