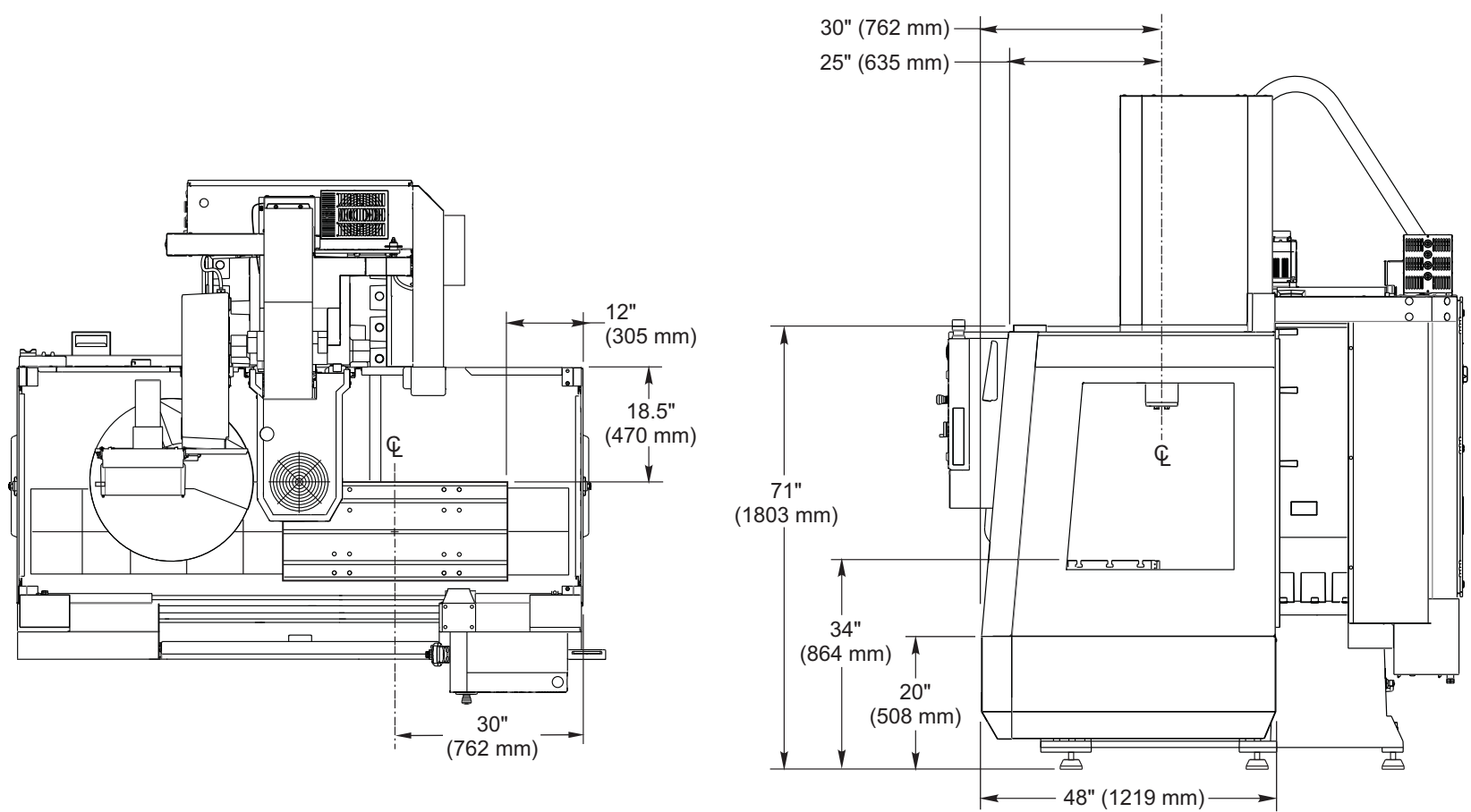
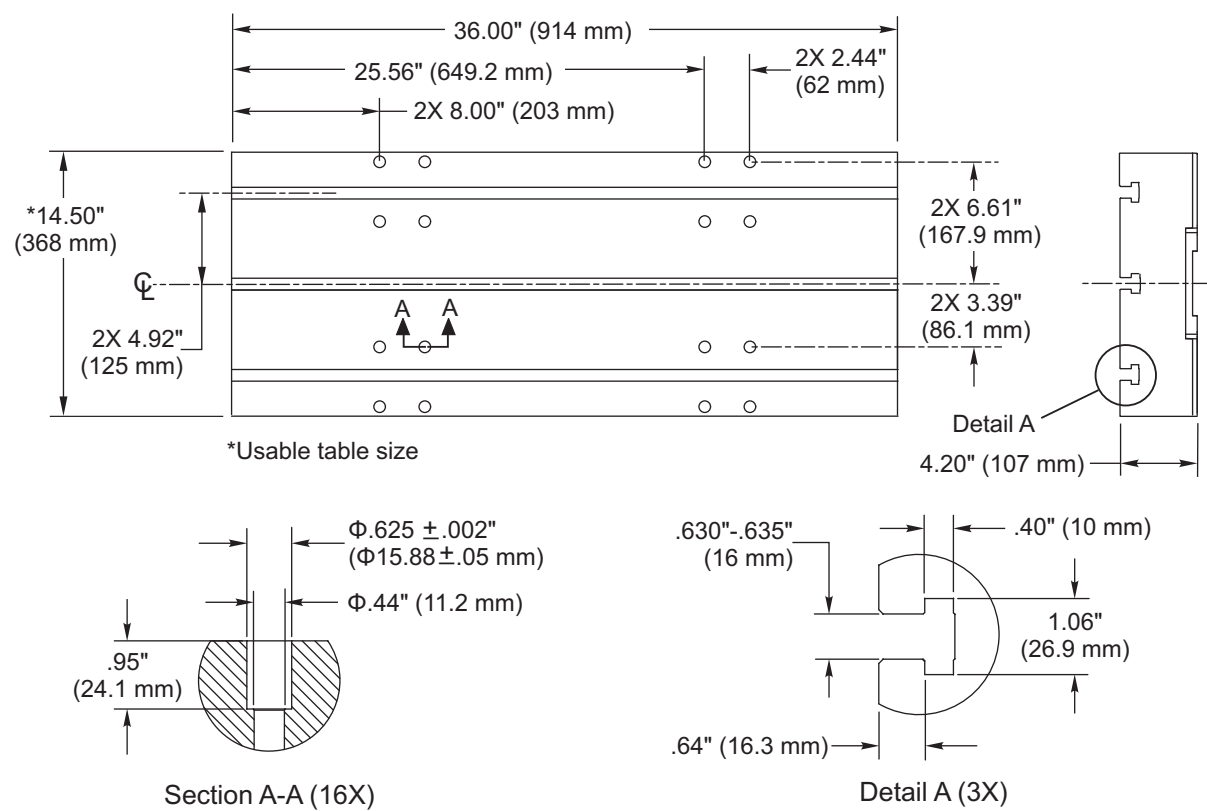


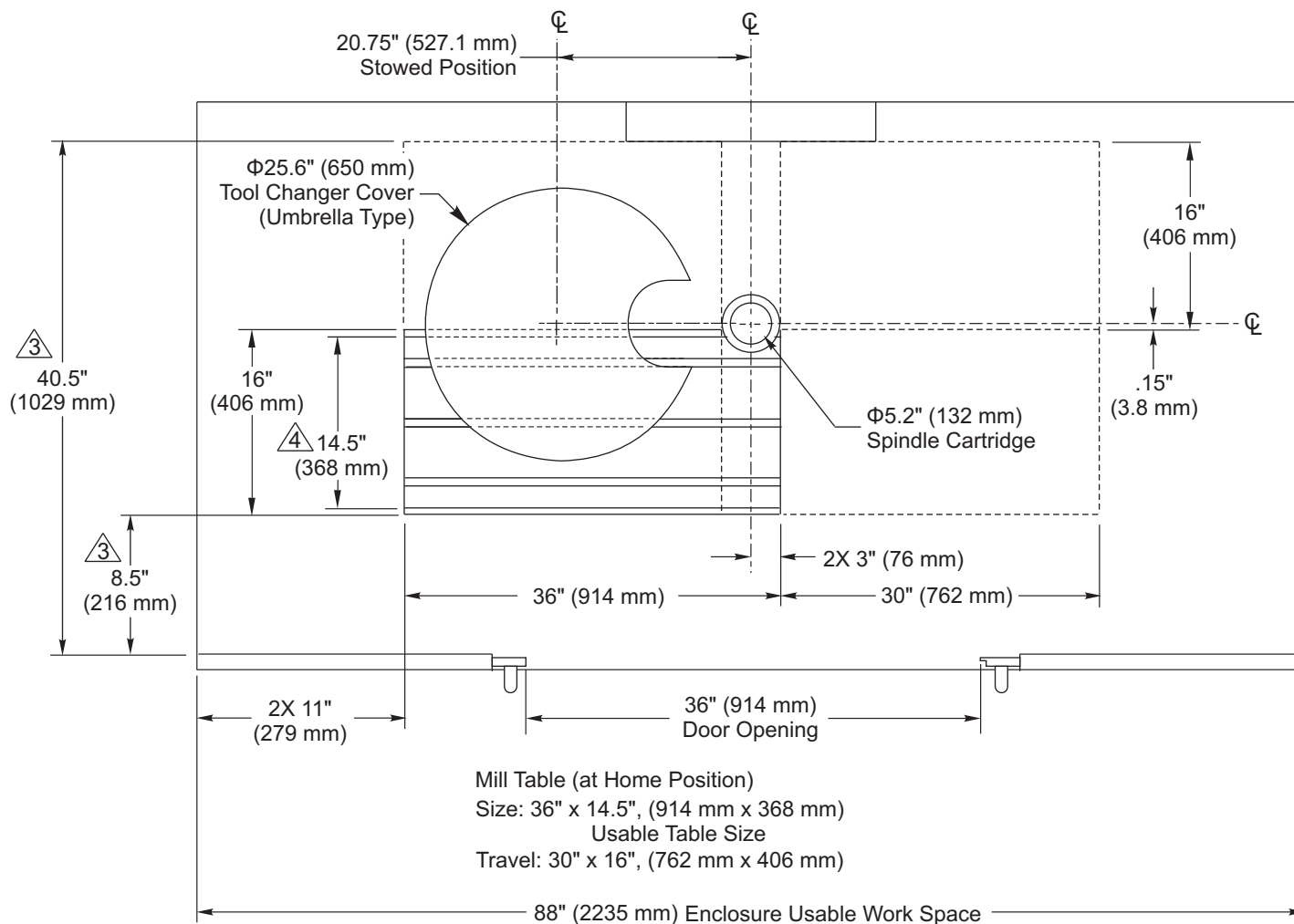
Machine Clearance Heights from the Bottom of the Base Casting



Sheet Metal Enclosure and Table to Exterior Sheet Metal Dimensions



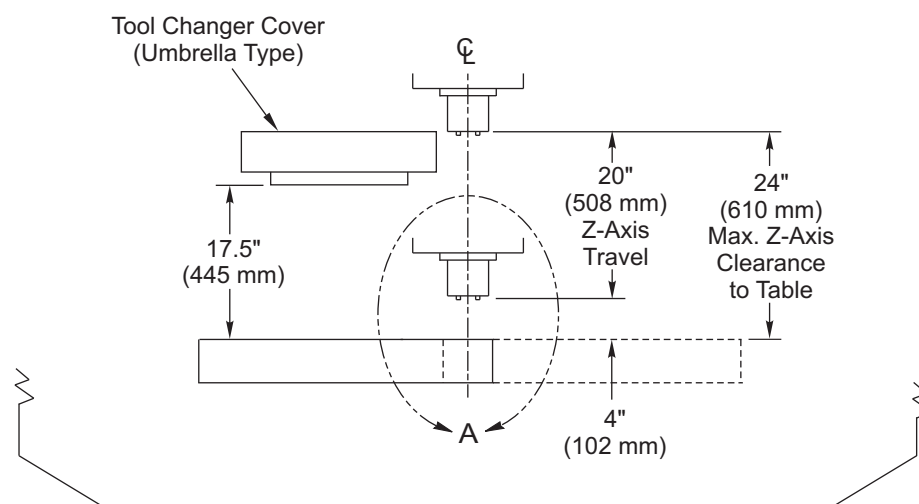
VF-2 Table Dimensions



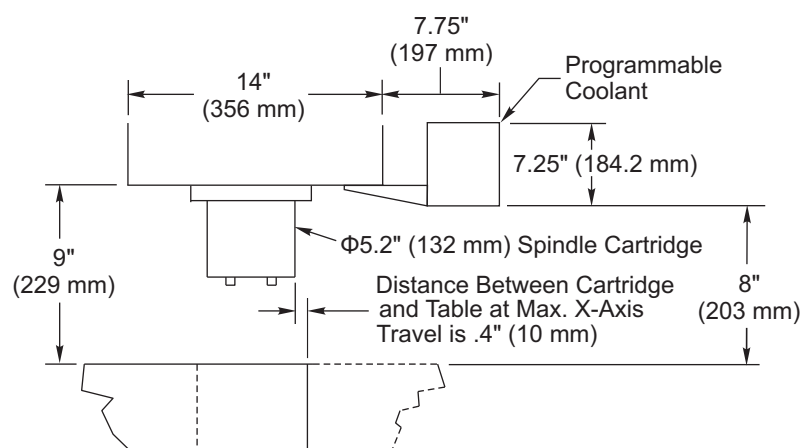
- Notes:
1. Table position(s) at max X and Y travels.
 2. Measurements are from the edge of mill table to nearest obstruction (ie. enclosure, way cover, doors, etc.).
 3. Dimensions are reduced as height above table increases; ie. Front of enclosure is sloped 5 degrees inward from bottom to top. Dimensions shown are at table top height.
 4. Table: 14.5" (368 mm) Machined

Top View

Enclosure Work Space



20 Station Carousel Tool Changer Front View



Detail A

- down 4.5" (114 mm).
diameter.
rm.
-
- Technical drawing of a machine component, likely a pump or motor housing, showing dimensions and assembly features. The drawing includes a top view and a side view. Key dimensions and features are labeled:
- Top view dimensions:
 - Overall width: 24.1" (612 mm)
 - Overall height: 20.9" (531 mm)
 - Internal width: 2.7" (69 mm)
 - Side view features:
 - A circular feature (likely a flange or mounting hole) is shown.
 - A vertical dimension of 4.5" (114 mm) is indicated for the distance from the top of the component to the center of the circular feature.
 - Assembly features:
 - Two triangular markers labeled '3' and '2' indicate specific assembly points or features.

Technical drawing of the machine footprint showing dimensions and clearances. The drawing includes the following specifications:

- Top Width:** 10.1" (257 mm)
- Side Mount Tool Changer Arm:** Indicated by a dashed line and arrow.
- Tool Gauge Line:** A horizontal reference line.
- Clearance Dimensions (Left Side):**
 - 23" (584 mm) Min.
 - 21" (533 mm) Min.
- Clearance Dimensions (Right Side):**
 - 4.5" (114 mm) (Triangle symbol)
 - 20" (508 mm) Z-Axis Travel
 - 24" (610 mm) Max. Z-Axis Clearance to Table
- Bottom Dimensions:**
 - 2X 11" (279 mm)
 - 88" (2235 mm) Enclosure Usable Work Space
 - 4" (102 mm)
- Feature A:** A circular feature labeled 'A' with a dashed line.

Technical drawing of the machine tool showing dimensions and components:

- Overall width: 14" (356 mm)
- Distance from left edge to center of spindle cartridge: 7.75" (197 mm)
- Distance from center of spindle cartridge to right edge: 7.25" (184.2 mm)
- Spindle Cartridge: $\Phi 5.2"$ (132 mm)
- Distance Between Cartridge and Table at Max. X-Axis Travel is .4" (10 mm)
- Table Height: 9" (229 mm)
- Machine Base Height: 8" (203 mm)
- Programmable Coolant: Indicated by an arrow pointing to the coolant system.

Note: Drawing is formatted for 11" x 17".
Drawing will print to 8.5" x 11".